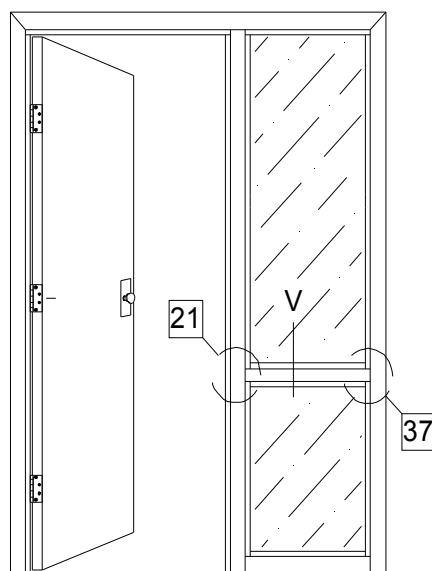
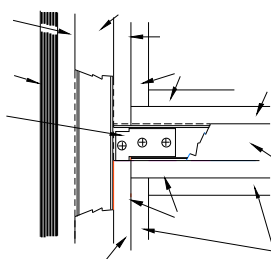


Installation of 300 SERIES Horizontal Mullion

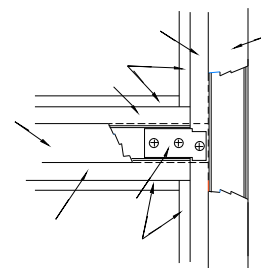
- 1) Install Mullions
 - a. Assemble the Glazing Jamb and Sidelight Glazing per Cross Section V.
 - b. Mount the F Clips (2 each) shown in Joint Detail 21 & 37 to the Mullion on one face only.
 - c. Mark the desired location of the Mullion on the Sidelight Glazing and on the Glazing Jamb of the sidelight or relight.
 - d. Position the Mullion between the Sidelight Glazing and Glazing Jamb and secure one F Clip only to one of the vertical members.
 - e. Check for level, adjust and secure the other F Clip.
 - f. Install the remaining F Clips (2 each) on the opposite face
 - g. Snap in the Glass Stop as shown in Cross Section V.
 - h. Return to the Installation Instructions for the sidelight or relight.
- 2) Install Horizontal Mullion Trim (Install After Vertical Trim has been installed.)
 - a. Locate the Horizontal Mullion Trim. (2 each pieces, square cut at both ends)
 - b. Install per Cross Section V, keeping the Trim tight to both Vertical Trim members, per Joint Detail 21 & 37.



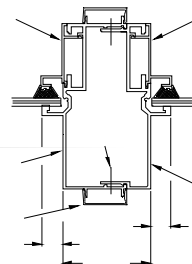
ELEVATION



JOINT DETAIL 21



JOINT DETAIL 37



CROSS SECTION V